

Eclipse BV-PAK

Packaged Butterfly Valve & Actuator

Version 1



The Eclipse BV-Pak is a fully assembled package that makes ordering simple and installation efficient. It is typically used for the regulation of air or fuel-gas in combustion systems where it serves as the control element in a temperature control loop. It does not provide tight shut-off. The assembly includes an Eclipse catalog 902 Trilogy T500 series actuator mounted to a catalog 720 butterfly valve with bracket, fasteners and coupling.

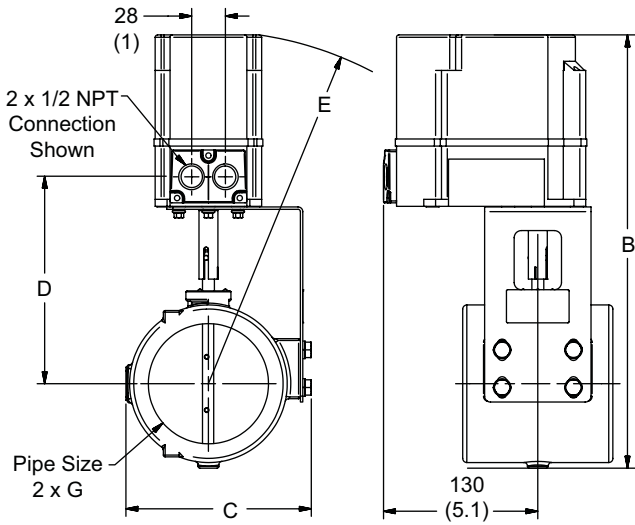
Installation Notes

- Make sure the area is clean and prevent contaminants from entering the valve and piping.
- Take steps to prevent dropping the assembly.
- Allow space for removing the actuator cover and accessing wiring.
- Provide support for the piping and assembly in accordance to local codes.
- Do not use the actuator or bracket for holding or turning points.
- Hold the BV-Pak assembly stationary with a pipe wrench at the valve body end nearest to the pipe while turning the pipe into the threads.
- Refer to Instruction Manual 902 for wiring and setting the actuator.

Parameter	Specification
Pipe Size	1/2 to 4 inch
Thread Type	BSP or NPT
Flow Port	Full, Reduced, or High-Drop
Disc Shutter	75° Beveled or 360° Non-Beveled
Power Supply	120VAC or 230VAC, +10% / -15%, 50/60Hz
Drive Signal	Electronic (4-20mA, 0-10V, Pot), 3-Position Step, or 2 Position
Cable Entry	2x M16 or 2x 1/2 in. NPT
Orientation	Perpendicular or Parallel to pipe
Manual Language	English, German, Spanish, or Mandarin
Environment	IP66 / NEMA 4
Temperature	-20 to +60°C (0 to 140°F)
Approvals	CE, cULus
<i>Refer to Instruction Manual 902 and Data 720 for more specification details.</i>	

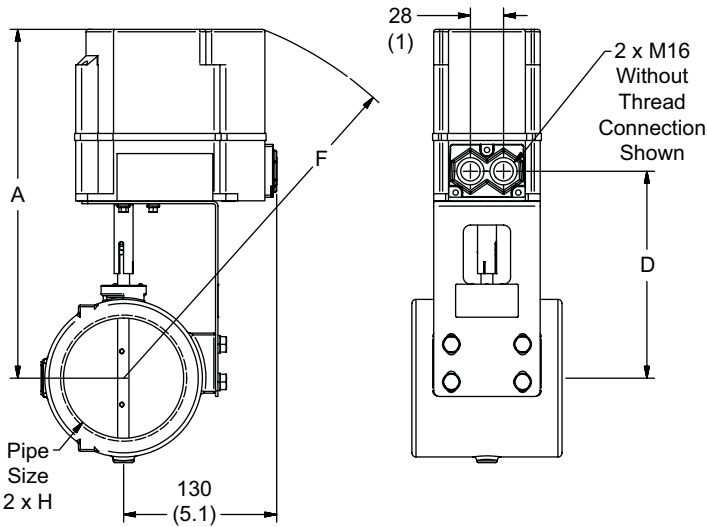
Dimensions and Weights

Parallel to Pipe Flow NPT Shown



Dimensions in mm (inches)								
Model	A	B	C	D	E	F	G	H
02	250 (9.8)	276 (10.8)	63 (2.5)	130 (5.1)	254 (10)	276 (10.9)	1/2" NPT	Rc 1/2
03	250 (9.8)	276 (10.8)	63 (2.5)	130 (5.1)	254 (10.0)	276 (10.9)	3/4" NPT	Rc 3/4
04	252 (9.9)	282 (11.2)	70 (2.7)	132 (5.2)	255 (10.0)	278 (11)	1" NPT	Rc 1
05	255 (10.0)	288 (11.3)	78 (3.1)	135 (5.3)	258 (10.2)	281 (11.1)	1-1/4" NPT	Rc 1-1/4
06	257 (10.1)	294 (11.6)	85 (3.3)	137 (5.4)	260 (10.2)	283 (11.2)	1-1/2" NPT	Rc 1-1/2
08	265 (10.4)	309 (12.2)	101 (3.9)	145 (5.7)	268 (10.6)	290 (11.4)	2" NPT	Rc 2
10	275 (10.8)	326 (12.8)	117 (4.6)	155 (6.1)	278 (10.9)	300 (11.8)	2-1/2" NPT	Rc 2-1/2
12	282 (11.1)	339 (13.4)	130 (5.1)	162 (6.4)	285 (11.2)	305 (12)	3" NPT	Rc 3
16	295 (11.6)	366 (14.4)	157 (6.2)	175 (6.9)	298 (11.7)	318 (12.5)	4" NPT	Rc 4

Perpendicular to Pipe Flow Metric Shown



Model	Weight kg (lbs)
02	3.4 (7.5)
03	3.4 (7.5)
04	3.4 (7.5)
05	3.6 (8)
06	3.6 (8)
08	4.2 (9.3)
10	5.4 (12)
12	5.9 (13)
16	6.4 (14)



Offered By:

Power Equipment Company
2011 Williamsburg Road
Richmond, Virginia 23231
Phone (804) 236-3800
Fax (804) 236-3882

www.peconet.com